

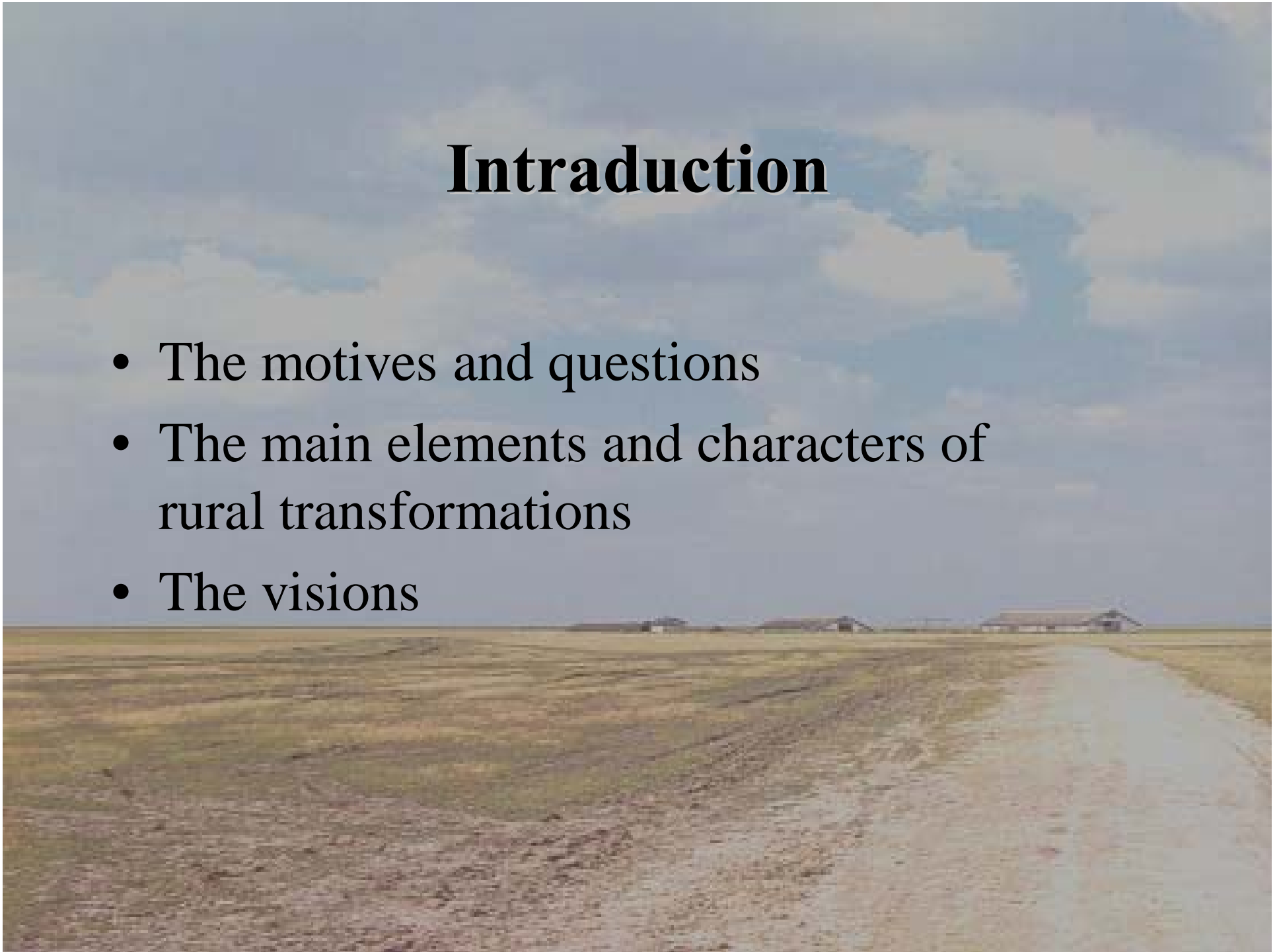
A wide, flat landscape under a cloudy sky, with a road leading towards distant buildings.

Rural visions in East Central Europe

Dr. Bálint Csátori CSc., geographer
Centre for Regional Studies
Hungarian Academy of Sciences

Intrroduction

- The motives and questions
- The main elements and characters of rural transformations
- The visions



Paul Cloke

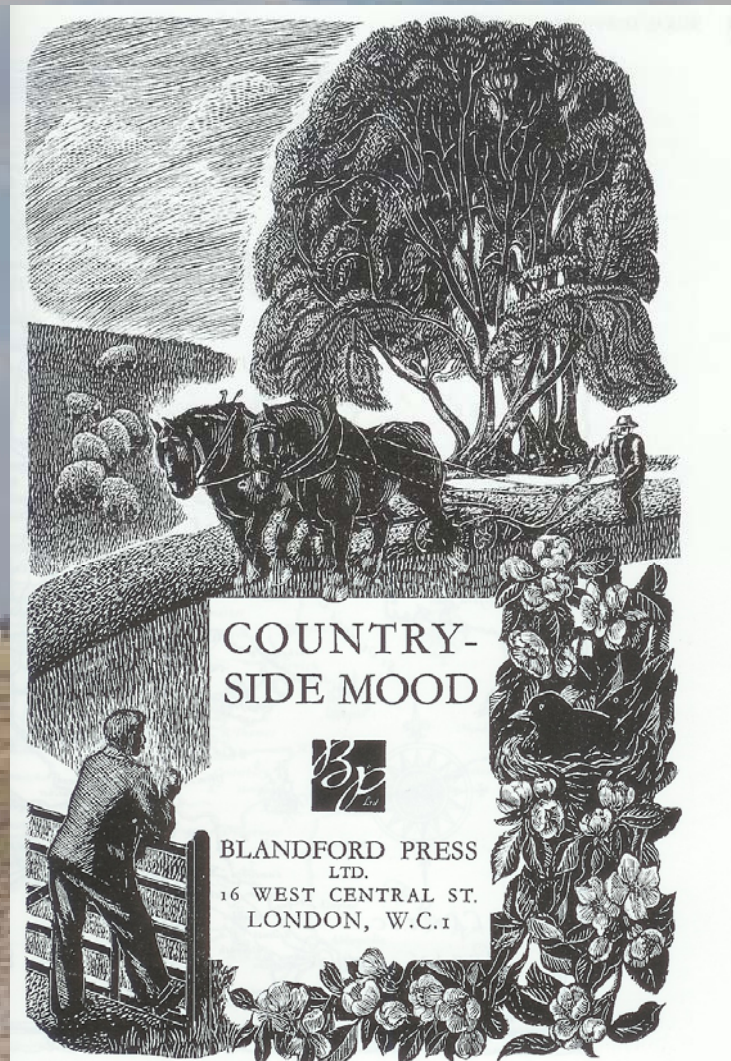
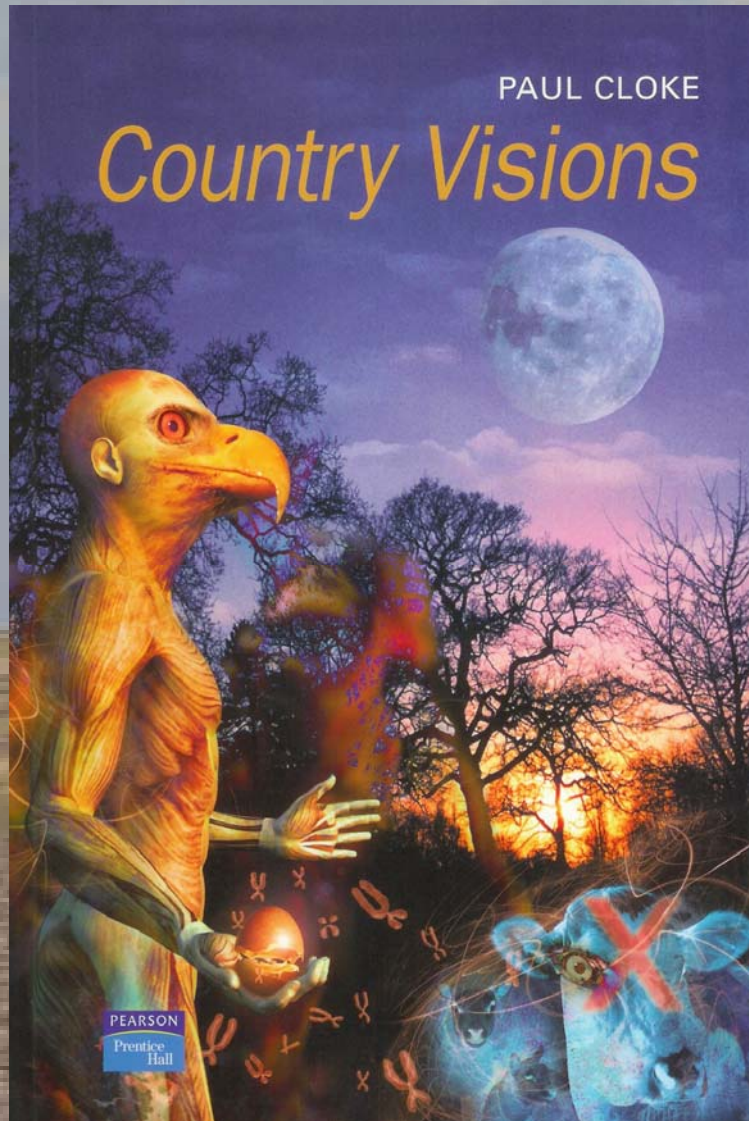


Figure 4.7 *Countryside Mood* (1943) title page engraving.

Móricz Zsigmond (1879 -1942)

Árvácska (Orphanage)



New Hungary (!) Rural Development Strategy

2007-2013



AZ ÚJ
MAGYARORSZÁG
VIDÉKFEJLESZTÉSI
STRATÉGIAI TERV
TÁRSADALMI EGYEZTETÉSE



Alakítsuk együtt a vidék jövőjét!



Kapcsolódjon be Ön is!



Where is (the rural) Europe?



The rural idyll



The characteristic features of rural Hungary

1970 – 2000

- Subsidy of agriculture, the cooperatives and state farms, COMECON(!),
- Low level rural infrastructure, bad accessibility,
- Desintegration in the towns - villages connections
- „Inflation” of rural areas (unemployment, social problems, migration, etc.)
- „Limeted” new function
- „Unbelievable” suburbanization in the rural space

The result: we do not know where we are? ☺ ☹ in Europe?

The „Hungarian pusta”



The agricultural activity

	1970	1980	1990	2000
település	mgaktiv	mgaktiv	mgaktiv	mgaktiv
Ágasegyháza	898	641	429	117
Ballószög	599	338	217	91
Bugac	2091	1239	843	563
Bugacpusztaháza	-	-	115	70
Helvécia	1411	1003	675	183
Hetényegyháza	728	482	-	-
Kecskemét	6209	4753	5277	1220
Lakitelek	1324	1020	856	130
Nyárlőrinc	829	738	589	124
Szentkirály	950	654	577	182
Városföld	675	657	557	172
Összesen	15714	11525	10135	2852

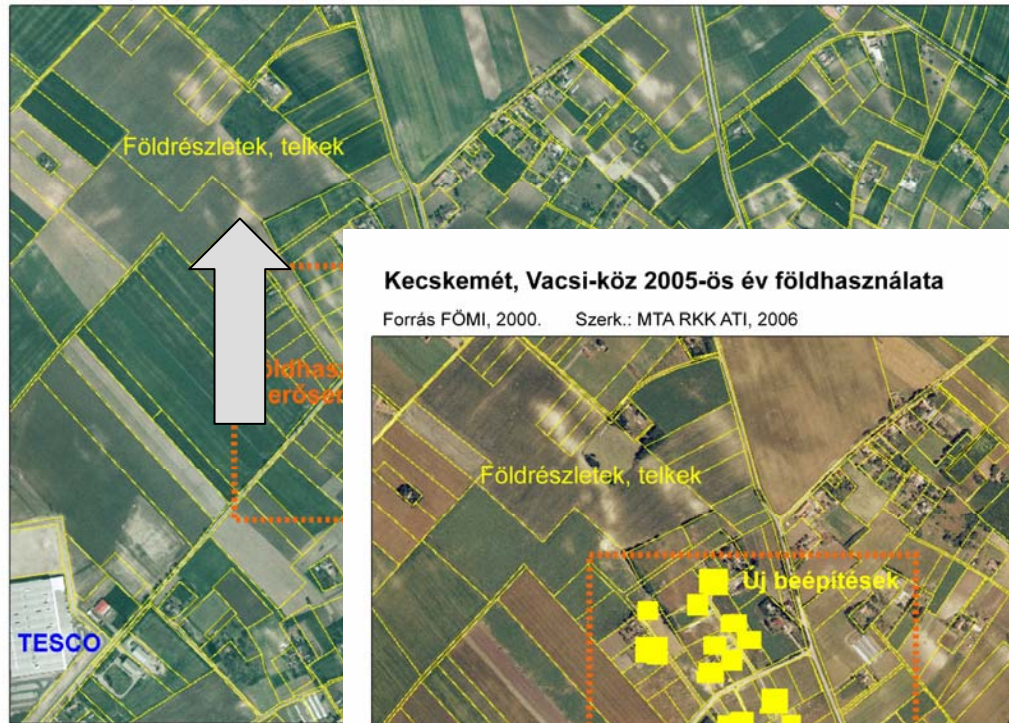
Scattered farms in Kiskunság



Conflicts in the rural – urban fringe 1

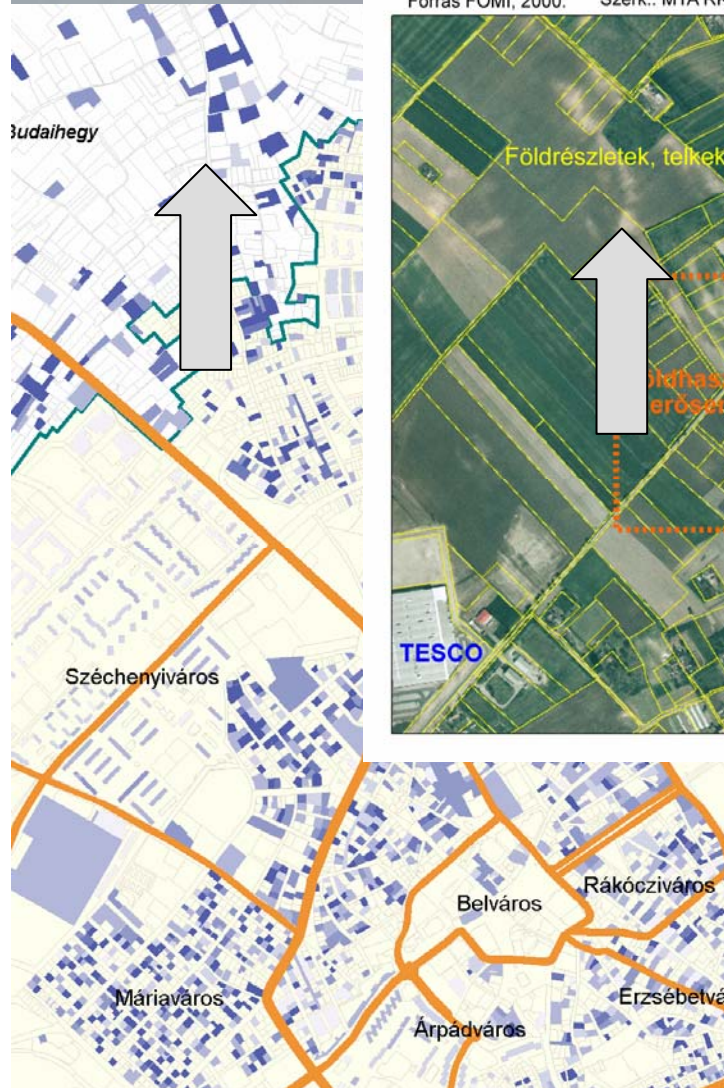
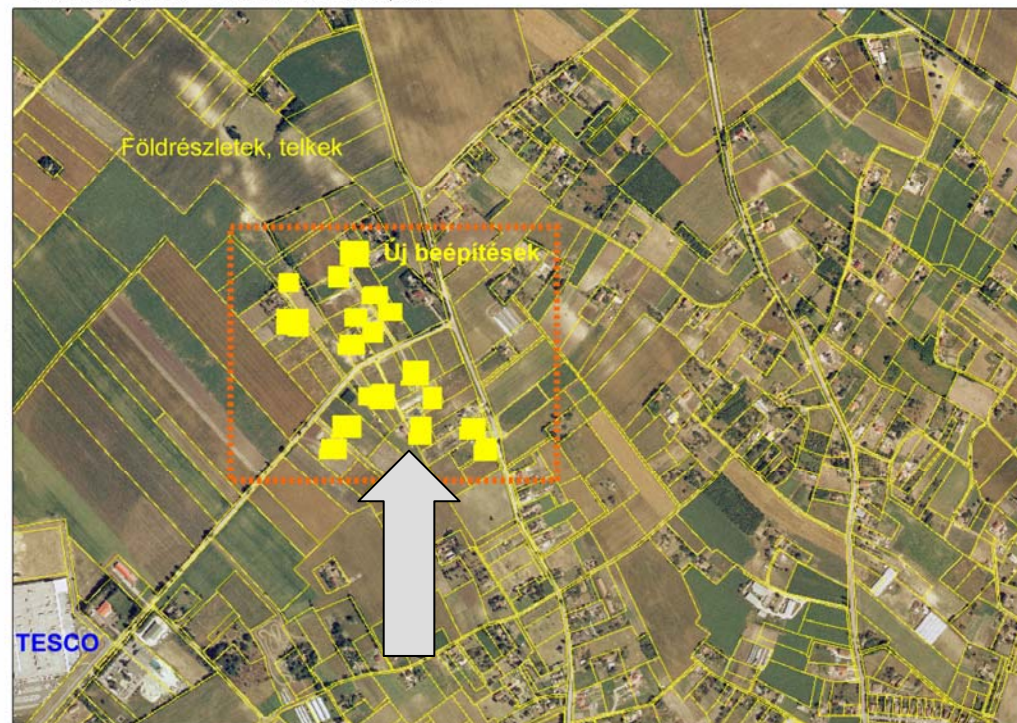
Kecskemét, Vacs-köz 2000-es év földhasználata

Forrás FÖMI, 2000. Szerk.: MTA RKK ATI, 2006



Kecskemét, Vacs-köz 2005-ös év földhasználata

Forrás FÖMI, 2000. Szerk.: MTA RKK ATI, 2006



Conflicts in the rural – urban fringe 2.

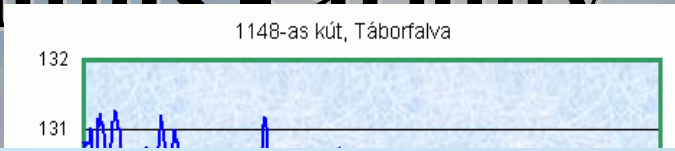


The Hungarian Dallas!

Haritage of landscape



The environmental conflicts - aridity



New rural function - tourism



The modern agricultural activity

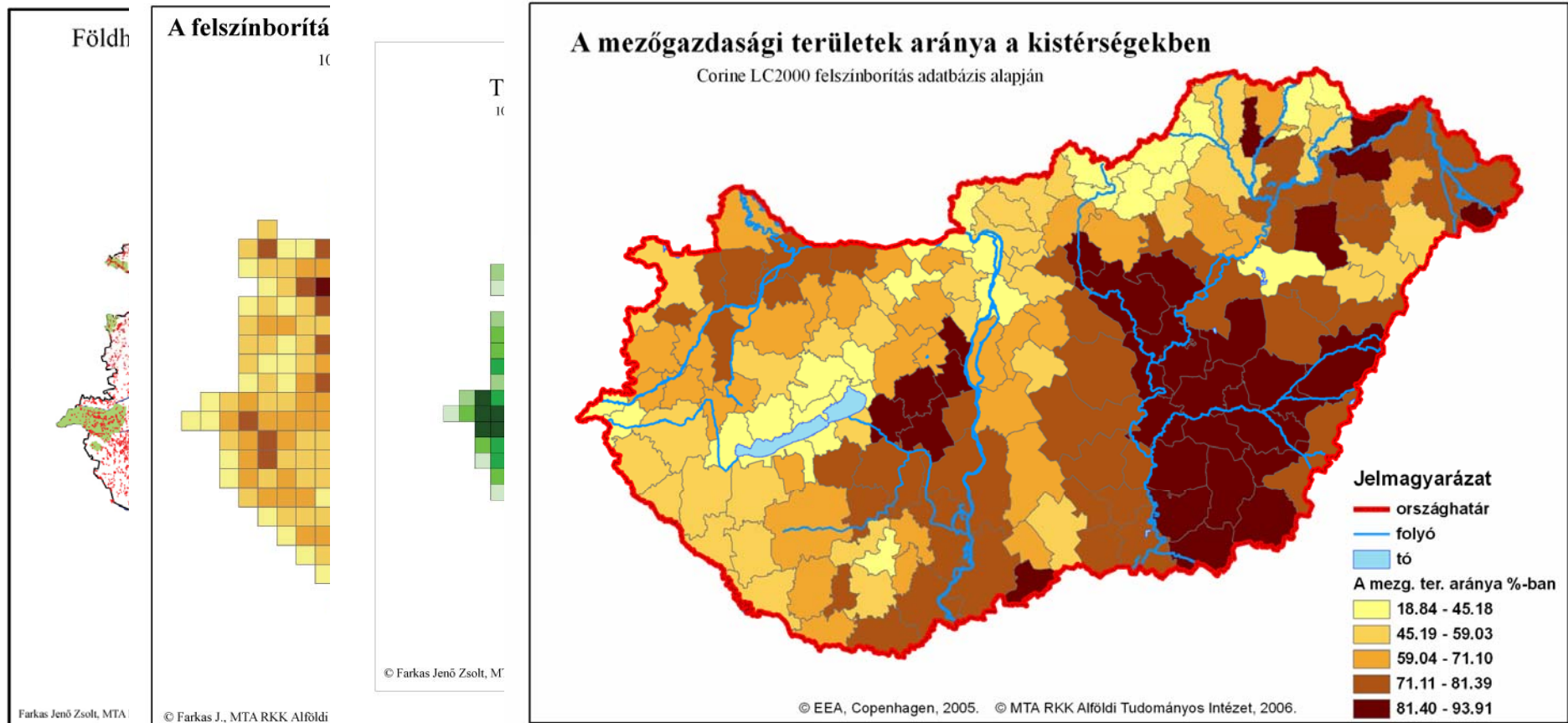


...and degradation

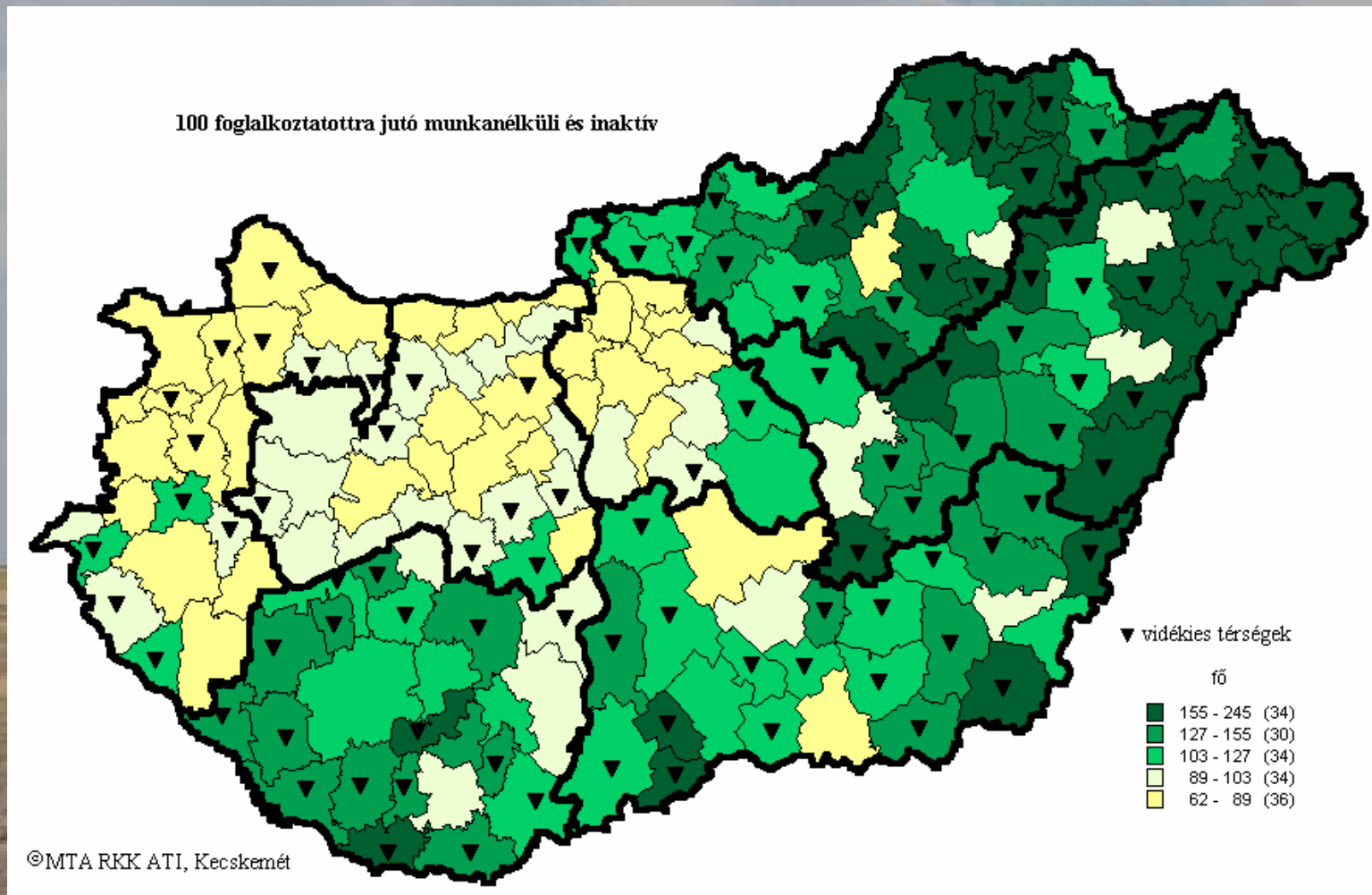


Transformation of land use system

Farkas Jenő ed.



Inactivity /100 p.

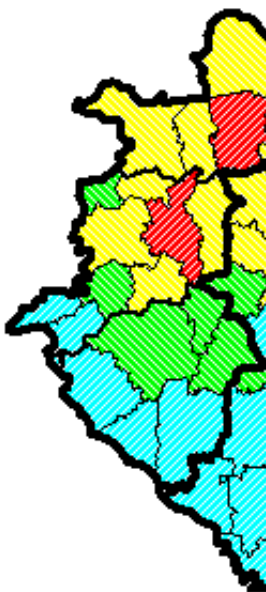


The social problems



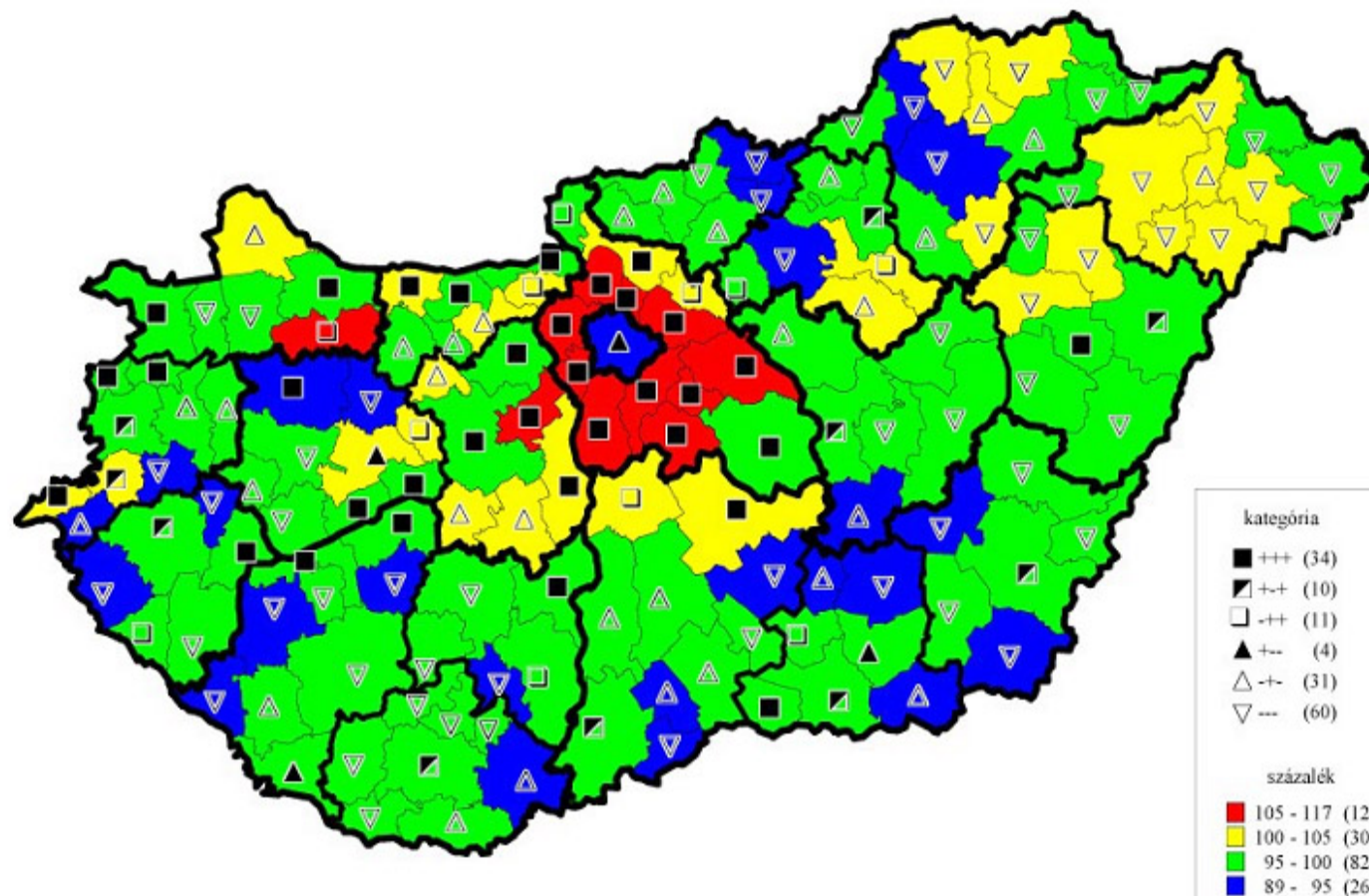
The accesibility and the migration

19. ábra: A kistérség Bp. elérési ideje=50%, ország régió három legnagyobb



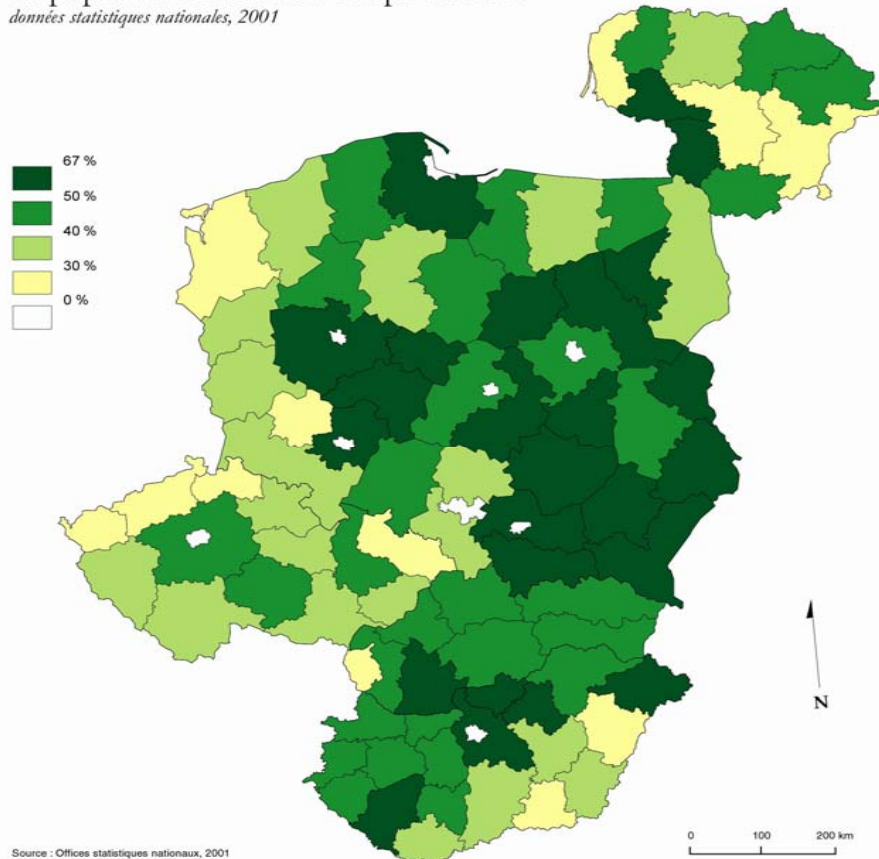
Copyright © 1999 MTA RKK

3. A lakónépesség számának változása (1990-1999) és a vándorlás típusok összehasonlítása

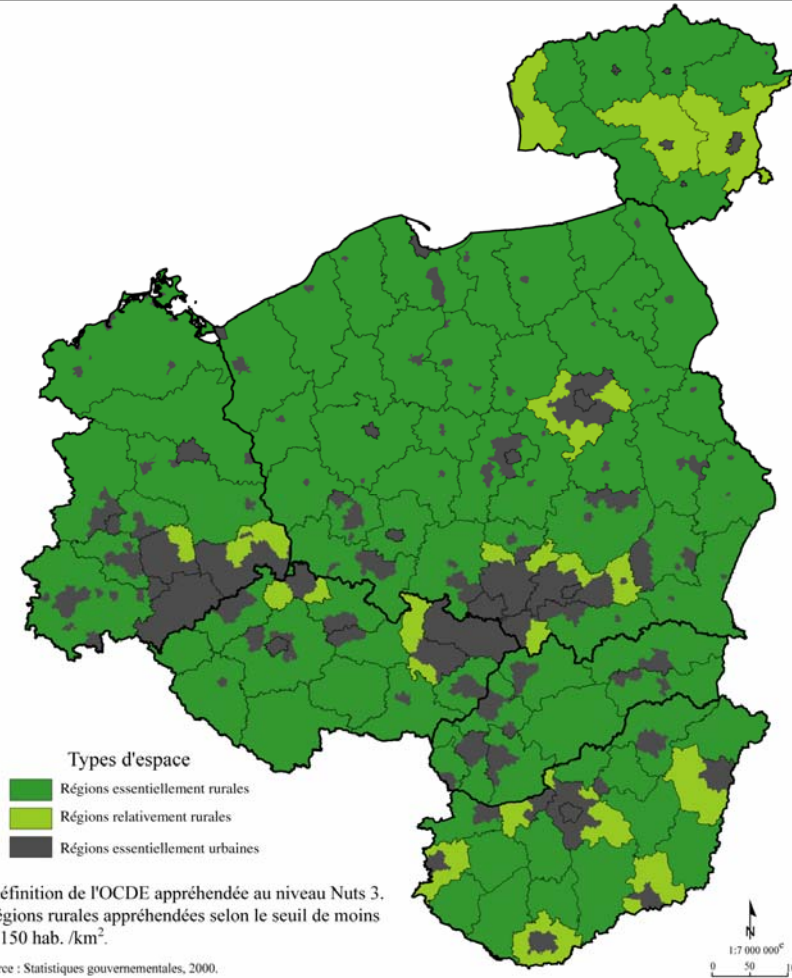


By Marie – Claude Maurell

La population rurale en Europe centrale *données statistiques nationales, 2001*



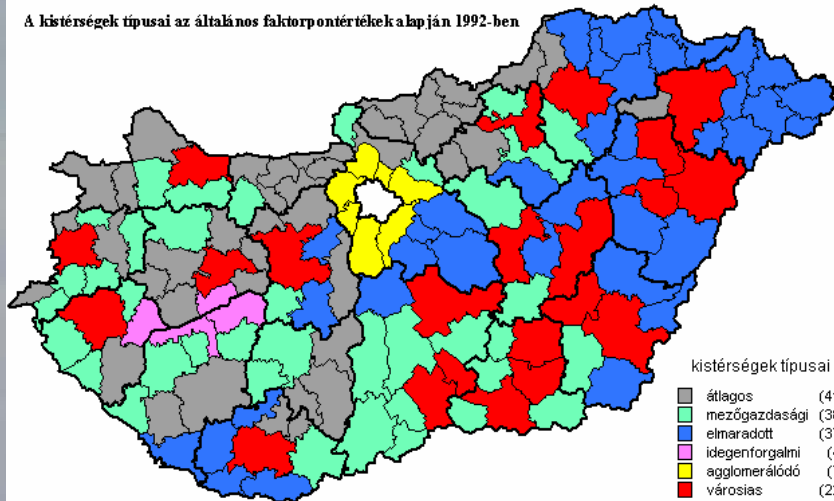
Source : Offices statistiques nationaux, 2001
Réalisation : S. Depraz/S. Coursière
Laboratoire M.T.E. - U.M.R. 5045, 2004
avec Phlcarto (<http://perso.club-internet.fr/philgeo/>)
ACI Espaces et territoires - Reproduction interdite



Clusters of micro regions

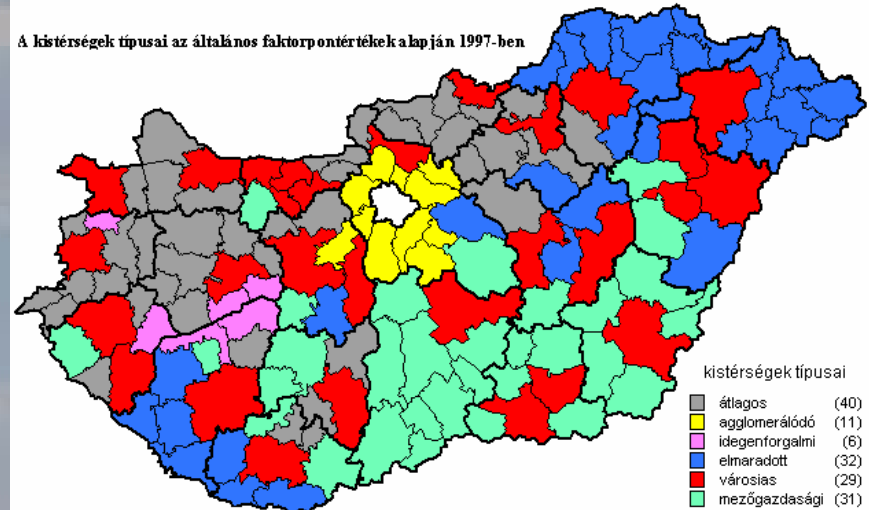
1992, 1997, 2002

A kistérségek típusai az általános faktorpontértékek alapján 1992-ben



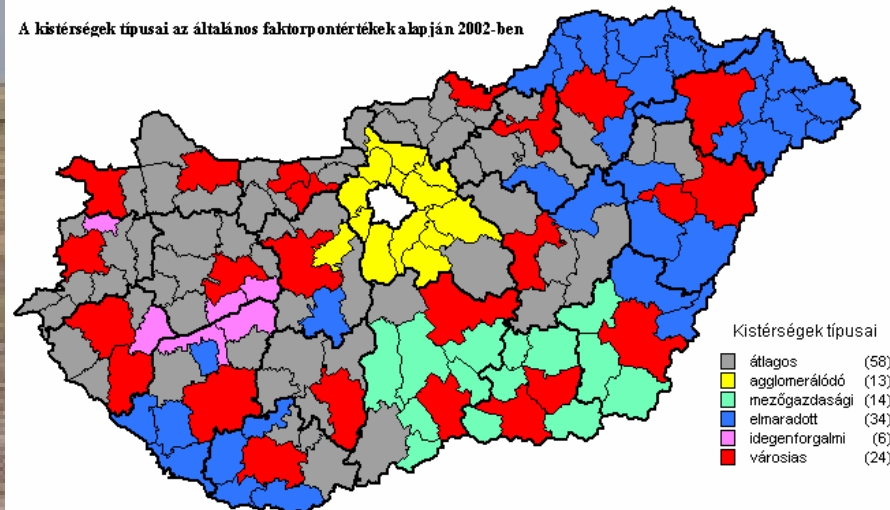
©MTA RKK ATI, Kecskemét

A kistérségek típusai az általános faktorpontértékek alapján 1997-ben



©MTA RKK ATI, Kecskemét

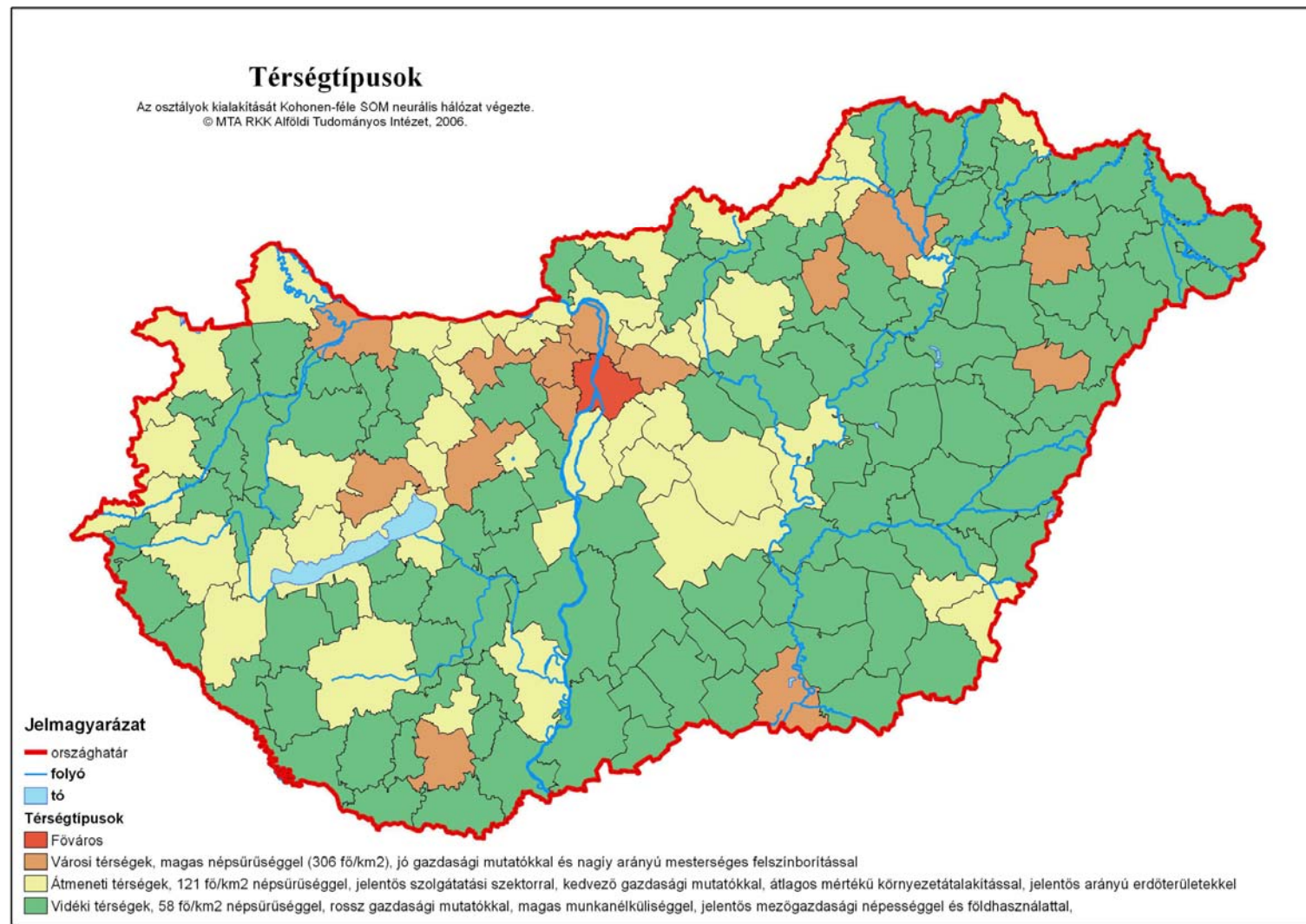
A kistérségek típusai az általános faktorpontértékek alapján 2002-ben



©MTA RKK ATI, Kecskemét



Rural clusters



The visions

1 / strong urban influence, suburban rural space

2 / moderate urban influence, capable of revival rural space

3 / peripheral, depopulated rural space

A / competitive agricultural sector

B / agro-environmental, bio-agricultural sector,

C / alternative energy-sector

I / sustainable and revival,

II / „authentic” rural (+tourism and second homes)

III/ diversification of rural economy



„maidenhair“

Thanks for your attentions!